



Lord Kensington House, 5 Radnor Terrace, London

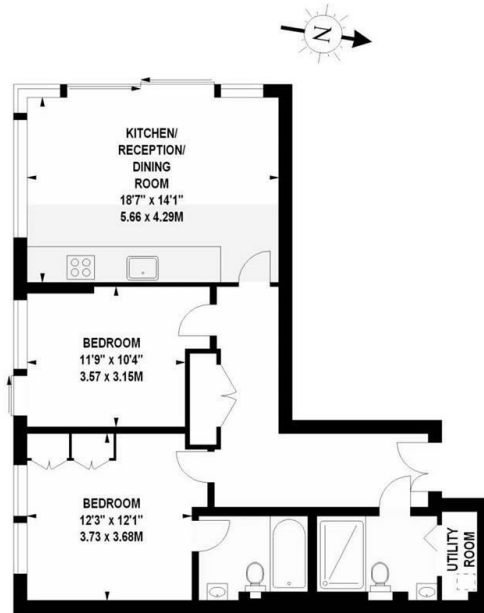
Asking Price £1,175,000

- 2 Bedrooms
- Kitchen
- EPC Rating B
- 2 Bathrooms
- Lift
- Residents Gym/Spa/Sauna
- Reception
- Concierge
- Residents Cinema

Lord Kensington House, W14

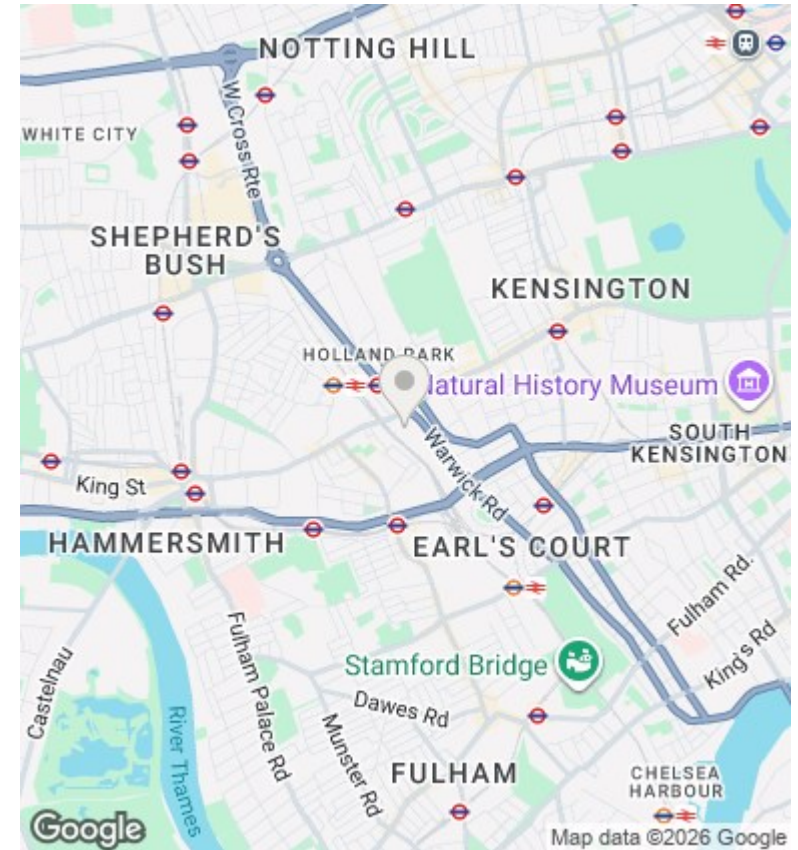
Approximate gross internal area

830 sq ft / 77.11 sq m



Tenth Floor

Illustration For Identification Purposes Only. Not To Scale
*Floorplan Drawn According To RICS Guidelines



Directions

Viewings

Viewings by arrangement only. Call 02070990800 to make an appointment.

Council Tax Band

F

EPC Rating:

B

| Energy Efficiency Rating | | Current | Potential |
|---|--|-------------------------|-----------|
| Very energy efficient - lower running costs | | | |
| (92 plus) A | | | |
| (81-91) B | | 82 | 82 |
| (69-80) C | | | |
| (55-68) D | | | |
| (39-54) E | | | |
| (21-38) F | | | |
| (1-20) G | | | |
| Not energy efficient - higher running costs | | | |
| England & Wales | | EU Directive 2002/91/EC | |